

# MINI CROSSER

- The original



medemagroup





## MINI CROSSER - The original

The Mini Crosser is made in Scandinavia, specifically for Nordic conditions. It is the best-selling electric scooter in Northern Europe. We can supply a comprehensive range of scooters and accessories.

The features that set the Mini Crosser apart are **functionality, strength, comfort, durability, safety and overall economy**. With the Mini Crossers adaptability and huge range of accessories, it is suitable for all types of user - Adults as well for children.

In our experience, adaptability and flexibility are important factors for lots of users, especially those with arthritis, muscular atrophy, MS, back pain and others.

Over time, one's needs often changes, for example a different accelerator control, a larger seat, extra support, electric add-ons and other accessories. With the Mini Crosser, you have a safe and secure future.

- ✓ We deliver and produce quality aids and services for the health sector, the disabled and the elderly.
- ✓ We adapt our service to the customer's needs.
- ✓ We have our own development and production which creates possibilities for the users to participate in society.
- ✓ We focus on attractive design and functionality rooted in an innovative Scandinavian environment.

You have the option to see some of our Mini Crosser on youtube. If you have on your smartphone the QR reader, you can access those. In order to install QR reader, search the web for QR reader either at iTunes or Goggle store. If you do not have this option, and you want to see those videos, search YouTube "medemagroup".







**Mini Crosser M1 Model**  
3-wheeler  
Page 22



**Mini Crosser M1 Model**  
4-wheeler  
Page 23



**Mini Crosser M2 Model**  
3-wheeler  
Page 24



**Mini Crosser M2 Model**  
4-wheeler  
Page 25



**Mini Crosser HD**  
User weight 250 kg  
Page 26



**Mini Crosser M2 Maxx**  
2-motor drive  
Page 27



**Mini Crosser M-Joy**  
Joystick steering  
Page 28



**Mini Crosser also for children**  
Page 29



**Cabin**  
4-wheeler  
Page 30







1980



1984



1986



1987



1989



1991



1997



2003



2009

»Hatching out by a duck pond **doesn't matter** if you come from a swan's egg...«

Since 1980 Mini Crosser has been producing electric scooters and wheelchairs for the elderly and the disabled. Mini Crosser's vision is to offer solutions for the walking impaired, enabling them to keep up an active, socially grounded life as far as possible without the help of other people.

Particularly the Mini Crosser is noted for its smart designs, maneuverability and powerful motors. The powerful motors have made Mini Crosser extremely popular in countries with steep slopes and hills. Even ice and snow cannot stop these all-terrain vehicles, while Mini Crosser is also available with studded tires. Over the years, Mini Crosser has acquired all the knowledge and expertise to secure users the maximum pleasure and benefit from their electric scooter or wheelchair.

When standard solutions - as supplemented by our wide range of accessories - are not enough, a special adaptation is possible and is made in close consultation with technical aid centers, institutions and the disabled organizations. The current Mini Crosser range includes some 20 models and a wide selection of accessories - including other life enhancing aids for the disabled.



# The Mini Crosser-choice

The philosophy behind the Mini Crosser gives you individual choices...

## The reason

We do not believe that »one size fits all«. When making a Mini Crosser it has to be Strong, Stable and Secure. However, our aim and goal is still to make it simple and easy to use for all persons involved.

## This means

All Mini Crossers are being built individually towards the end-user. We want to have a high degree of satisfaction.

## The conclusion

Over the years Mini Crosser has acquired all the knowledge and expertise to secure users the maximum pleasure and benefit from their Mini Crosser. When standard solutions - as supplemented by our wide range of accessories - are not enough, a special adaption can be developed in close consultation with technical aid centers, institutions among others.

## 3- or 4-wheeler

Page 6



Black

Blue

Grey

## Seat system

- ERGO2 - Page 8
- EBLO - Page 17
- HD - Page 18
- Children - Page 18

## Speed - Page 18

- 10 km/h • 13 km/h • 15 km/h

## Battery size

- 56 Ah • 80 Ah • 94 Ah

## Mini Crosser model

Page 22-30

- M1 3W
- M1 4W
- M2 3W
- M2 4W
- M1 + M2 4W Cabin
- M1 + M2 4W HD
- M2 4W MAXX
- M-Joy 4W

## Accessories

Page 32

- Mirror
- Basket / bag – front and rear
- Cane / crutch holder
- Trailer
- Gas control option
- Driving cap
- Footplate and leg support
- Wheels
- Lap belt
- Electrical options
- Etc.

**Further information about the Mini Crosser**  
standards, approvals etc. – Page 39

# Mini Crosser

M-Model 3-wheeler



## Mini Crosser M-model 3-wheeler

The Mini Crosser M series is the strongest and most comfortable electric scooter on the market by miles. Its strong motor and unique suspension are packaged in an unusually elegant design. Mini Crosser represents Danish workmanship and quality at its best. Mini Crossers come with lots of nice touches and unique customization options.

Our very wide range of seats and accessories can meet every requirement - for example, seats are available in widths of 34-70 cm. This brochure shows the most popular equipment. If there is something you cannot see here, please get in touch - we are bound to find the solution. The Mini Crosser M-model is built for people up to 175 kg as standard. The M-model 3-wheeler is suitable for driving inside stores and shops, due to the nimble turning radius of 134 cm

The Mini Crosser 3-wheeler is classified as a class C vehicle in accordance with the European classification of electric scooters.

Complies with the Medical Device Directive 93/42/ECC. The Mini Crosser is made in accordance with the harmonized standard EN 12184 - Electrically powered wheelchairs, Mini Crossers and their chargers.

The product is risk analyzed in accordance with the harmonized standard DS/EN ISO 14971:2007-04-10 2. Edition - Medical devices - Application of risk management to medical devices.

- Transport height without seat - 69 cm
  - Length - 134 cm
  - With anti-tip wheels - 142 cm
  - Width, without seat and other accessories - 68 cm
  - Turning circle / radius 268 cm / 134 cm
  - Weight without seat and batteries 115 kg
  - Speed - 10 -13 and 15 km/h
  - (Maximum speed depends on the law for your country)
  - Seats from 34 to 70 cm
- (Other technical data we refer to our user guide)

## M-Model 3-wheeler

- Springs - a unique, adjustable rear suspension.
- Wheels - optional as puncture proof.
- Range - different battery covers and battery options, range up to 70 km with 94 Ah batteries.
- Seat tube - seat height adjustable without tools.
- Tail lights and turn signals (light emitting diodes - LEDs)





# Mini Crosser

M-model, 4-wheeler



## Mini Crosser M-model 4-wheeler

The Mini Crosser M series is the strongest and most comfortable electric scooter on the market by miles. Its strong motor and unique suspension are packaged in an unusually elegant design. Mini Crosser represents Danish workmanship and quality at its best. Mini Crossers come with lots of nice touches and unique customization options.

Our very wide range of seats and accessories can meet every requirement - for example, seats are available in widths of 34-70 cm. This brochure shows the most popular equipment. If there is something you cannot see here, please get in touch - we are bound to find the solution. The Mini Crosser M-model is built for people up to 175 kg as standard. The M-model HD version can carriage up to 250 kg, but only as a 10 km/h version

The Mini Crosser 4-wheeler is classified as a class C vehicle in accordance with the European classification of electric scooters.

Complies with the Medical Device Directive 93/42/ECC. The Mini Crosser is made in accordance with the harmonized standard EN 12184 - Electrically powered wheelchairs, Mini Crossers and their chargers.

The product is risk analyzed in accordance with the harmonized standard DS/EN ISO 14971:2007-04-10 2. Edition - Medical devices - Application of risk management to medical devices.

- Transport height without seat - 69 cm
- Length - 140 cm
- With anti-tip wheels - 148 cm
- Width, without seat and other accessories - 68 cm
- Turning circle / radius 345 cm / 172,5 cm
- Weight without seat and batteries 124 kg
- Speed - 10 -13 and 15 km/h
- (Maximum speed depends on the law for your country)
- Seats from 34 to 70 cm

(Other technical data we refer to our user guide)

## M-Model 4-wheeler

- Springs - a unique, adjustable rear suspension.
- Wheels - optional as puncture proof.
- Range - different battery covers and battery options, range up to 70 km with 94 Ah batteries.
- Seat tube - seat height adjustable without tools.
- Tail lights and turn signals (light emitting diodes - LEDs)





# When we sit down, it requires more than we think

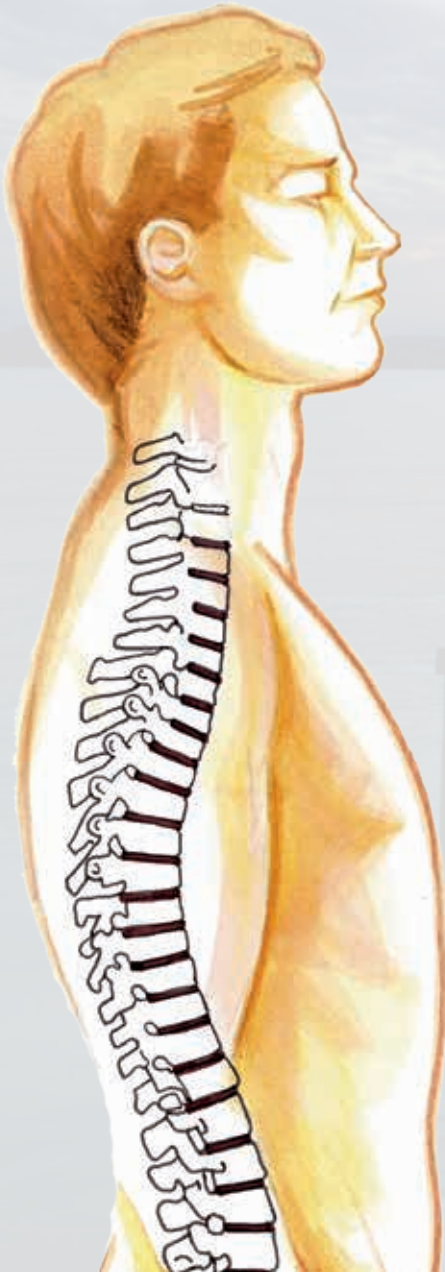
With many other activities such as reading, speaking, writing and watching television, we are usually sitting. The general perception is that our body, i.e. our muscles do not have to work particularly much and therefore we relax.

This is only correct when we sit in the correct posture. When our posture is incorrect, our muscles are working even harder! In such situations, the load on our spine, shoulders etc. usually two to three times greater when compared with when we get up.

A good seat design helps prevent fatigue and other disorders. As a result, the chair shall ensure that the body occupies the most natural position, which prevents the back to fall back into a convex spine.

ERGO2 focuses in all respects for the individual user. Therefore, each seat is adjustable so that it can adapt the user's body shape with a focus on the correct seat height, the correct seat depth, the correct armrest height and the correct lumbar support.

For people with knee and Hip disorders can seat height and support for the calf adjusted independently, either on the seat or with seat accessories.



## The sitting / driving position

To sit with a straight back makes the highest demands on the spine (Natural) position. Because the chair suit the user's physique, positioned pelvis correctly, the spine will receive full support and legs relieved, and thus create a relaxing sitting position.

## Getting up position

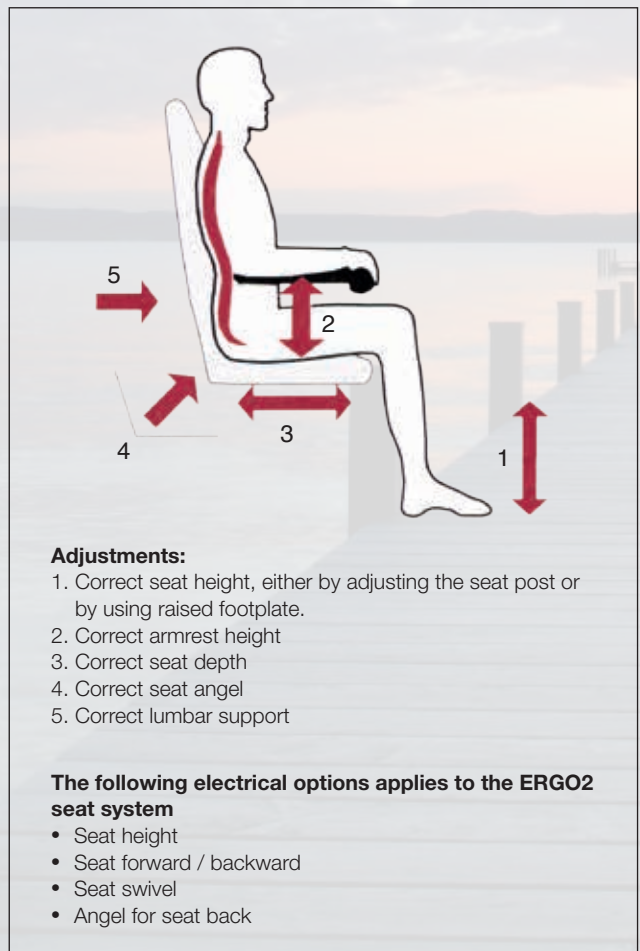
To lift themselves out of the chair may require a lot of strength. Therefore the ERGO2 armrests have been strengthened so it can withstand the force one put on them when getting out of the chair. The possibility to move the ERGO2 seat forward and use the swivel (Right or Left) provides an easier way to get out or into the seat.

## The ERGO2 seat system fulfills the:

Static, impact and fatigue strength according to ISO 7176-8: 2002 - This is the standard, that states - The seat must fulfill the weight capacity of the scooter. The ERGO2 are tested towards this standard, ie the Mini Crosser are built for 175 kg user weight, then the seat and armrest must be able to cope this weight - the individual armrest must cope 95 kg pressure in a 15-degree angle, 5 cm from the end of the armrest without breaking.

Fire tested according to EN 1021-1 and EN 1021-2.

DIN EN 1122 Bio compatibility - Testing the seats and armrests.





Therefore, a seat is not just  
**only a seat...**



Ergo2 Seat, 40 cm Width. M-127-07-152N



Ergo2 Seat, 45 cm Width. M-127-07-153N



Ergo2 Seat, 50 cm Width. M-127-07-154N



# ERGO2 seat offer greater freedom - better quality of life

## Standard on all ERGO2 seat system



### Seat angle

The backrest angle can be adjusted 45° backwards and 90° forwards. This is done by pulling the handle on the right side of the seat.

By flipping the backrest down, remove the headrest and lowering the tiller the height of the Mini Crosser is 75 cm.

Otherwise, turn the seat; then move the seat forward, remove the headrest and lower the tiller then the height is 72 cm. Subject to the seat tube system and wheel size



### Seat depth

Backrest adjustable in depth from 320 mm to 550 mm. Seat depth adjustment is important when it will provide the support to the thigh and back.







**Handle for seat swivel**

To turn the seat, the handle is pulled back or forward, depending on which side it is mounted. The seat can then be turned to either side, with stopping every 45°.

The lever is spring loaded and the seat locks automatically when the lever is released.

This lever is located, by default on the right, but can also be placed at the left side.

When the handle is in the left side, you have to push forward on it, to turn the seat, instead of pull back. The handle can also be adjusted in length so it is easier to operate, it can also easily be moved to the other side



**Lever for seat forward / back**

ERGO2 seat system uses two sliding rails with roller; this make the adjustment very easy. The seat moved forward or back as desired, within a travel of 200 mm.

By releasing the handle, the seat automatically locks at the nearest stop.

The seat post system for the ERGO2 also provides firm and secure seating position.



**Height adjustment of the armrests**

The armrests can be individually adjusted in height. Up to 140 mm from lowest point to highest position.

This helps to ensure the correct alignment. The armrest can be angled individually so with height adjustment gives this a comfortable support.









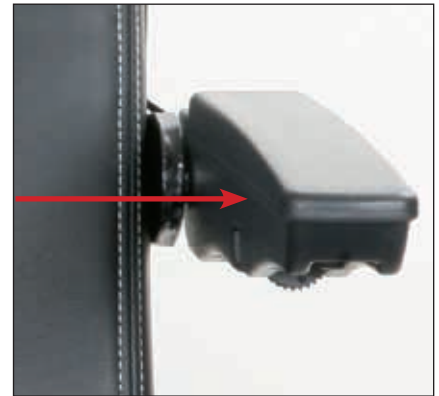
# Mini Crosser

ERGO 2 seat



## Width adjustment of the armrests

Each armrest can individually be adjusted 25 mm, on each side.



## Adjusting the armrest angle



## Height Adjustment headrest / Adjusting the headrest back and forth

The headrest can be adjusted up and down and back and forth.  
Neck support, for the ERGO2 Seat - M-127-7-200

With the combination of the adjustment options of the ERGO2 seat system together with the adjustment options on the Mini Crosser M-Models, we have focused to provide the best seat comfort for the individual user.

### In brief we provide the option

- Angling the tiller
- The height adjustment of the tiller
- Seat height
- Seat angling
- Seat depth
- Armrest height
- Armrest angle
- The armrest width
- Headrest adjustment





# ERGO2 seat accessories

In addition to the ERGO2 seat unique adaptations, it also provide an also large selection of accessories, which can be fitted onto the seat to make life easier for you.

## Accessories



Rear basket, universal - from 34 cm to 70 cm.  
M-127-06-165



Cane / crutch holder for one pair of crutches, mounted on the Ergo2 seat M-127-06-003



Lap seatbelt for Ergo2 seat system. 65 to 125 cm  
M-127-06-144  
Seatbelt, auto roll back for Ergo2 Seat  
M-127-07-161



Warning triangle with bracket for Ergo2 seat  
M-127-06-973



Cup holder, mounted to Ergo2 seat system  
CR-00636



X-Grip Cell Phone Holder - Mini Crosser  
CR-03127



Armrest bag complete - Ergo2  
M-127-07-284



## Armrest system for ERGO2 seat

The ERGO2 seat system is standard mounted with this armrest.



Alternatively, the ERGO2 seat **can be fitted with these armrests:**

Armrest, Adult, Ergo2, Adjustable, without Cushions, Left.

M-127-07-169

Armrest, Adult, Ergo2, Adjustable, without Cushions, Right

M-127-07-170

Arm cushion ergo seat. SR-01633

Armrests cushions, Leather - 70x300 mm, Right. CR-00190

Armrests cushions, Leather - 70x300 mm, Left. CR-00317

Armrests cushions, Leather - 100x350 mm, Right. CR-00777

Armrests cushions, Leather - 100x350 mm, Left. CR-00778

Armrests cushions, Leather - 70x400 mm, Right. CR-00783

Armrests cushions, Leather - 70x400 mm, Left. CR-00784

Armrests cushions, Leather - 70x350 mm, Right. CR-00787

Armrests cushions, Leather - 70x350 mm, Left. CR-00788



**For children and junior** we have developed armrest that can be fitted onto the ERGO2 seat system:

Armrest Holder, child ERGO2, Left. M-127-07-171

Armrest Holder, child ERGO2, Right. M-127-07-172

Armrest pad, MC Ergo standard child. SR-01635

Armrest Holder, child ERGO2, Left. M-127-07-171

Armrest Holder, child ERGO2, Right. M-127-07-172

Armrest pad, child; leather. - 70x210mm Left. CR-00775

Armrest pad, child; leather. - 70x210mm Right. CR-00776

Armrest pad, child; leather. - 70x260mm Left. CR-01341

Armrest pad, child; leather. - 70x260mm Right. CR-01342



## Leg support



Amputation support, right or left for M-127-07-162



ERGO2 Thigh brace support 100\*300, left or right adjustable for ERGO2 CR-03074



## Electrical seat options for ERGO2



Electrical seat column, complete, 15 cm seat lift for ERGO2 seat system. M-127-02-051



## Electrical forward / backward



Seat can be moved up 15 cm. User weight up to 175 kg. M-127-07-159



## Electrical backrest



Electric adjustable backrest for ERGO2 seat M-127-07-158

## Electrical swivel



Electrical seat swivel, up to 90° either left or right M-127-07-160



## EBLO seat

Basic seat.

Supplied with angle adjustment for the backrest, height adjustable armrests. Head restraint and slide rails.

EBLO Seat, Seat width 46 cm, Seat depth 45 cm.

M-127-07-022



Rear basket, universal - from 34 cm to 70 cm  
M-127-06-164



Lap seatbelt for Eblo & Ergo seat. 65 to 125 cm  
T-127-06-144



## ERGO HD seat

The ERGO HD seat have been additional reinforced at the seat and armrest for a particularly high user weight up to 250 kg.

60 cm Seat Width

M-127-07-101

65 cm Seat Width

M-127-07-102

70 cm Seat Width

M-127-07-103

Armrests cushions, Leather

- 70x350 mm, Right

CR-00787

Armrests cushions, Leather

- 70x350 mm, Left

CR-00788



## Ergo children and junior seat

Our Ergo seat, adapted to children and young people.

Child seat: width 35 cm, depth 20 - 30 cm.

M-127-07-008

Junior seat: width 37 cm, depth 25 - 40 cm.

M-127-07-007

Alternatively, adult seats are used.



## Transaxle options

There are 3 different options regarding speed for the Mini Crosser. However, in some countries there is regulations how fast a mobility product may go. Ask your local dealer or your local authorities what the traffic law states. For the Mini Crosser MaxX, Mini Crosser HD and for the Mini Crosser Joy, the limit is 10 km/h

### We offer

- 10 km/h version - this version is suitable for hilly conditions and cross country driving

- 13 km/h (8 mp/h) version - suitable for cross country driving

- 15 km/h version - this is normally used on even roads and grass

For your safety, the Mini Crosser - both 3- and 4 wheeler can be equipped with speed reduction when turning into corners.

Sensor, half speed 3W, M-model

M-127-06-170

Sensor, half speed 4W, M-model

M-127-06-208

## Parent key



**In order to facilitate safety for children and young people we offer different solutions.**

Parent speed with potentiometer - M-127-06-135

Speed reduction, key switch - T-127-06-121

Please note that the Mini Crosser M2 model have this standard.







# Colors for the Mini Crosser...





The Mini Crosser have 3 standard colors which you can choose from Metallic gray - Metallic blue and metallic black. The cabin however only comes in Metallic grey





# Mini Crosser

M1, 3-wheeler



## Best on three wheels

Danish workmanship.  
The highest quality in the industry.  
High comfort suspension.  
Particularly strong and reliable.  
Long service life.  
Wide range of accessories.  
Crash tested.  
Supply of spare parts guaranteed  
for at least 10 years.  
Fit for all climates.  
Environmentally friendly.  
Customised paintwork  
possible TÜV approved.  
ABE type approved  
for Germany.

This Mini Crosser is equipped with the Ergo2 seat and standard wheels.



## Step on it

Mini Crosser M-models are all fitted with an accelerator handle, and you can use your thumb or your four fingers to accelerate. The accelerator handle can be fitted to both sides, or a twist accelerator or foot pedal can be installed to meet your needs.



## Suspension

The suspension on the Mini Crosser absorbs road shock and ensures a good and comfortable tour. The shape and the winding of the springs and the quality of the steel ensure a long life of the springs.



## Accessories

High range of accessories is available in the standard version. Here shown with mirror and speedometer.



# Mini Crosser

M1, 4-wheeler

## Top quality on 4 wheels

Danish workmanship.  
The highest level of quality in the industry.  
Super-comfortable suspension.  
Extremely powerful and reliable.

Long life.

Wide range of accessories.  
Crash Test completed successfully.  
Supply of spare parts guaranteed  
for at least 10 years.

Fit for all climates.

Environmentally friendly.  
Special coating on request  
possible.

TüV approved. ABE type  
approved for Germany.

Fishing at the lake:



This Mini Crosser is equipped with the Ergo seat and standard wheels.



The Mini Crosser is suitable when driving in urban and rural areas.



With the Mini Crosser, you will gain your independence, so you can enjoy the benefits with your friends or family.



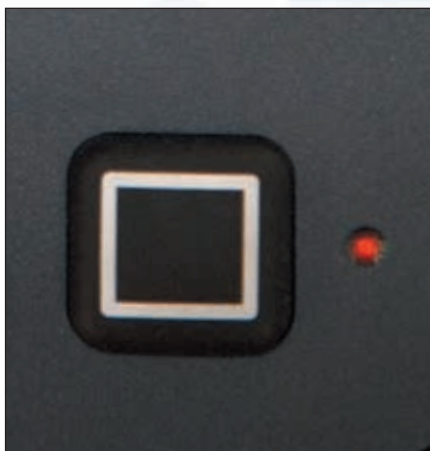


# Mini Crosser

M2, 3-wheeler



This is an M2 3-wheel Mini Crosser, special painted in white with Viking symbols; the seat is an EBLO seat system. Tires is golf wheels.



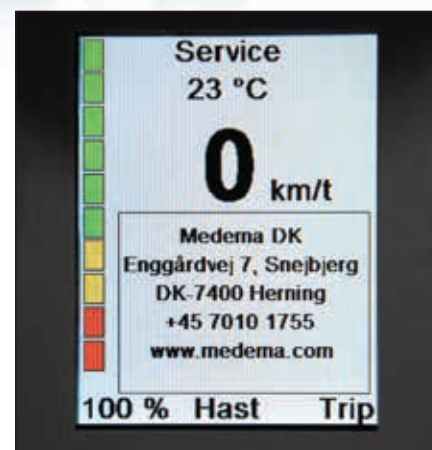
## Antitheft

You also have the option of installing an Anti-theft alarm system.



## Display

With the large display it provides an easy overview, for instance when you are activating the indicator. Obtained from the display, you can access information such as - how many kilometers have already been driven, the status of the battery voltage and much more - simply by pushing the button.



## Service information

By pressing a button, many other state and service information can be requested so that the driver of the Mini Crosser always can keep track.



# Mini Crosser

## M2, 4-wheeler

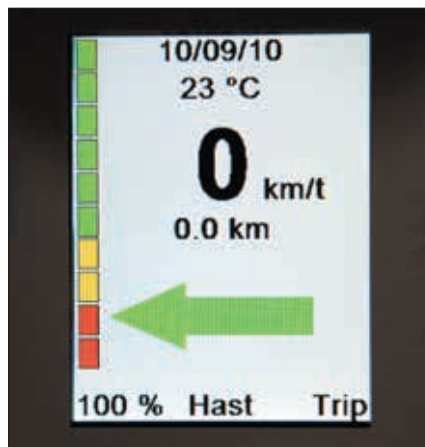
The Mini Crosser M2 is based on the proven M1. Although the M2 offers the same facilities and equipment as the M1, the information system on the M2 provides a whole range of new and innovative possibilities. The clear color display provides easy and intuitive information.

The M2 differs from its predecessor by the more powerful electronics, and above all its new information system with the bright color display. The color display is easy to read even in direct sunlight, because it is light sensor controlled. The main screen is very comprehensible and contains a lot important information to the user like date, time, temperature, miles driven, the actual speed and the battery status.



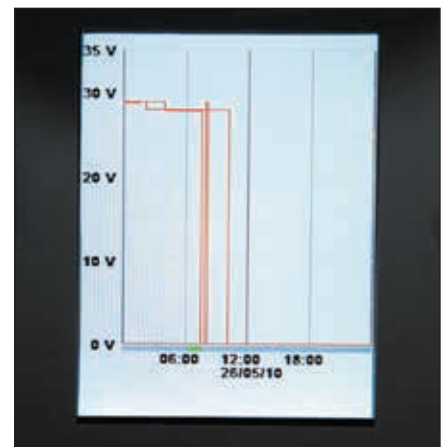
**Headlight assistant**

With the Mini Crosser M2 you also get a headlight assistant with day / night sensor, if desired. This ensures that the light turns on at dusk or at the entrance to the garage itself. Also the display will adjust to changing light conditions.



**The indicators**

You have the opportunity to design your own Mini Crosser. You can hear an audible signal, for example, if you go back or press the indicators. The indicators can manually switch off or automatically by the system, it is your decision.



**Data are stored**

Your Mini Crosser data are stored, so the service can be made more quickly and efficiently



# Mini Crosser

HD

## Extremely strong to cope with difficult challenges

User weight up to 250 kg.  
For maximum safety and accessibility for heavy users.

The frame and seat post are reinforced.  
Super-strengthened seats up to 70 cm.



### Robust quality

The Mini Crosser HD is specially manufactured, tested and approved for people up to 250 kg.



### Quality - above all...!

The Mini Crosser HD is based on the popular M-model. Designed for people weighing up to 250 kg.



### Super-strengthened HD seats

The seat and armrests are strengthened for user weights up to 250 kg. Supplied in seat widths of 60, 65 and 70 cm. (Special widths available).



# Mini Crosser

M2 Maxx

## Extremely strong cross-country scooter

With its 2-motor drive the MaxX is extremely powerful, making it the obvious first choice when you want to get out and about in the countryside. Extra large cross-country wheels. Reinforced frame. Seat width 35-70 cm. (Special widths available)  
Suitable for children, young people and adults.



Power testing and hill climbing:



### Extra large cross-country wheels

The MaxX has extra strong cross-country wheels for maximum accessibility.



### Extremely powerful

The Mini Crosser MaxX is equipped with 2-motor drive, for extreme power, traction and safety.



### Safety feature

The MaxX can also be supplied as a junior model with extras like a roll bar, seat belts, special colours, etc. Particularly suitable for the demanding driving of young people.





# Mini Crosser

M-joy with joystick

## Now everyone can drive a Mini Crosser

The Mini Crosser model M-joy with joystick control was developed for users with limited strength in their hands and arms.

The M-Joy is suitable for children, young people and adults. It's equipped with large wheels and a great suspension.

The M-joy has also the option to get the wide range of seats and accessories which is standard for all Mini Crosser M-models.

It can also be supplied with a cabin. High stability due to its own weight.



With the Mini Crosser M-joy you can enjoy driving out in the countryside.



As an option the Mini Crosser M-joy can be equipped with a parking brake.



The Mini Crosser M-joy can be equipped with a handlebar where a windscreen and a front basket are mounted.



# Mini Crosser

Children and young people

## Our popular model for children & young people

Suitable for children from the age of 3 years.  
The Mini Crosser 3W has a small turning radius and good manoeuvrability.  
Extremely powerful and reliable Mini Crosser  
High stability thanks to the high weight.  
Large wheels for secure mobility.  
The Mini Crosser is specially designed for Scandinavian climate and terrain conditions.  
Available in a wide variety of special colours.  
The wide range for different seats is also available.  
Parental key is also a possibility to have, so the speed is halved.  
For your safety, the Mini Crosser can be equipped with speed reduction when turning into corners.



**Your personal Mini Crosser**



**Mini Crosser that grows**

is tailored to the child - a vehicle that "grows".  
With multi adjustable child seat, steering column which can be lowered, adjustable footplate and throttle handles which is small in diameter.



**Cabin available**

The 4 wheel child and junior model is also available as a 4-wheeler cabin.





# Mini Crosser

## Cabin



The 4-wheel-M models - also the MaxX and MJ-version - are available with a cabin. With the cabin, you are always warm and dry throughout the year. It protects you against the weather elements. As an option, you will get the cabin with a heater, so even in the wintertime you can get outside. As standard, the cabin is equipped with electric wiper and washer. The windows in the side doors can be opened for fresh air, and the doors are lockable. The cabin is particularly well suited for people with impaired lung and respiratory function disabilities. The Mini Crosser Cabin is characterized by good space, and a low noise level. The view out of the cabin is good due to the large windows, but the cabin can be equipped with a back camera (accessory) for a better view when driving backwards. In summertime, the doors can be taken off and stored. The large front and back windows is scratch resistant safety glass.

### Technical details

Total length:	Total length incl. anti-tilt wheel
Total width:	161 cm
	169.5 cm
	73 cm

### Driving distance up to 60 km with 94 Ah batteries.

(Maximum driving distance with new batteries at +20° on flat, firm surface)





# Mini Crosser

## Cabin



The Mini Crosser with cabin is spacious and quiet, and has great views out of the large windows. The large doors make it easy to move in and out of the cabin.



The door handle is large, so it is easy to open the door. The door is lockable.



The windows are made of tempered and scratchproof glass, guaranteeing good visibility and durability.



The Mini Crosser cabin has a wide range of accessories, including the trailer.



# Mini Crosser

## Accessories



Mirror for Mini Crosser standard  
 Right - SR-05206  
 Left - SR-05207  
 Mirror for Mini Crosser Joy  
 Right - E-130-06-100  
 Left - E-130-06-101



Mirror extension 10 cm  
 Left / Right - T-127-06-187



Mirror for Cabin  
 Left - T-127-06-323  
 Right - T-127-06-324  
 Rear Mirror - T-127-06-814



Basket for tiller - M-127-06-163



Basket for Mini Crosser Joy  
 M-127-06-560



Rear Basket for Mini Crosser  
 ERGO2 Seat - M-127-06-165  
 EBLO & Ergo Seat - M-127-06-165  
 Cabin - M-127-06-164  
 Rear adapter for cabin  
 Accessory adapter for cabin II -T-127-6-952



Armrest bag complete - Ergo2  
 M-127-07-284



Cup holder, Ergo2  
 CR-00636



X-grip cell phone holder, Ergo2  
 CR-03127



# Mini Crosser

## Accessories



Rear box with locking system, complete for mounting. M-127-06-260



Oxygen tank holder.  
Mounted in c-rail.  
T-127-06-124



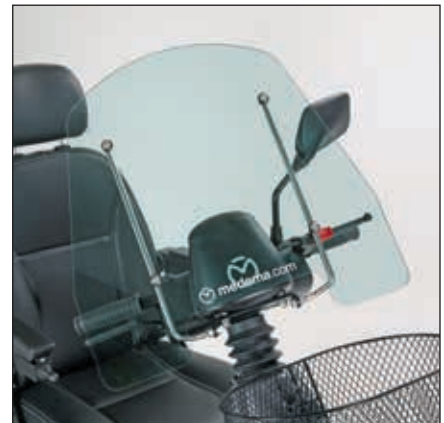
Golfbag holder.  
T-127-06-123



Cane / crutch holder for one pair of crutches.  
M-127-06-002.  
Adapter for cane/crutch holder. Mounted at  
the basket rear. T-127-06-573.



Signal flag mounted on the basket, rear.  
Basket not incl. S5-0002  
Signal flag mounted on the c-rail. S5-0004



Windscreen for Mini Crosser  
T-127-06-165



Cane/crutch holder for walking aids with four  
legs. T-127-06-151



Complete Adjustable handle with windscreen  
for M-joy.  
M-127-6-084

# Mini Crosser

## Accessories



Walking frame carrier, max. weight 20kg (44lb).  
T-127-06-122.

Rollator carrier, max. weight 20 kg (44lb).  
T-127-06-139.

Rollator carrier for Troja. T-127-06-585.  
Rollator carrier, electric. T-127-06-219.



Manual wheelchair holder, rear, max. Weight 20  
kg (44lb). T-127-06-131.

Tow bar for manual wheelchair. T-127-06-156.  
Manuel foldebar wheelchair. T-127-06-335.  
Holder with plate, mounted rear in c-rail.



Ball coupling for trailer.  
T-127-06-183



Trailer in black with lock and tow bar. T-127-06-159.

Trailer in black with lock, tow bar and light for the Mini Crosser Model M1. M-127-06-089.

Trailer in black with lock, tow bar and light for the Mini Crosser Model M2. M-127-06-189.



Dolphin children trailer, with ball coupling.  
Max.Weight 45kg (99lb).  
T-127-06-106



Speedometer for Mini Crosser M1.  
M-127-06-147



Handle for tiller, extended 40 mm.  
M-127-03-027



Left and right accelerator, with switch.  
M-127-06-171



# Mini Crosser

## Accessories



Twist grip throttle control right.  
T-127-06-153.  
Twist grip throttle control left.  
T-127-06-154



Footlever for gas - wigwag.  
T-127-06-574



Weatherproof tarpaulin cover.  
T-127-06-135XL



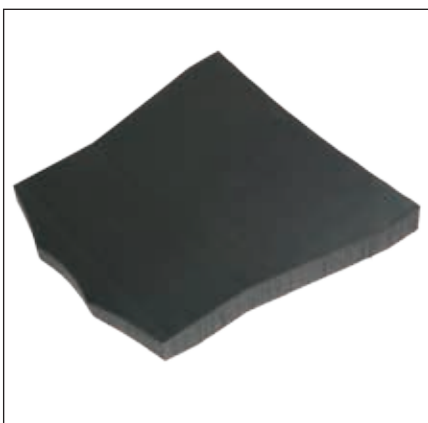
Thermal waterproof driving cap. T-127-06-129.  
Waterproof seat cover, adult. T-127-07-042.  
Waterproof seat cover, child. T-127-07-043.



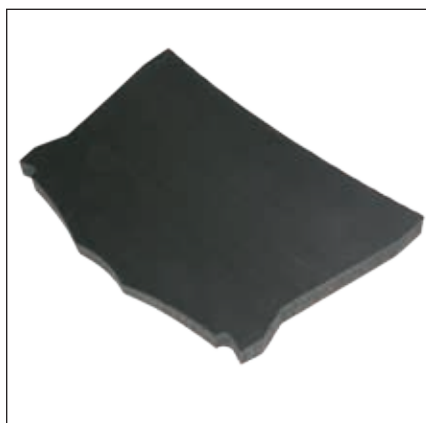
Rain cape for children. T-127-06-136.  
Rain cape for adult. T-127-06-137



Raised footplate, 3- and 4-wheel  
M-127-06-117



Raised footplate, 5 cm small 3W  
M-127-6-907  
Raised footplate, 5 cm large 3W  
M-127-6-906



Raised footplate, 5 cm small 4W  
M-127-6-909  
Raised footplate, 5 cm large 4W  
M-127-6-908



Extended footplate for 3 wheel, Right side  
M-127-06-119  
Extended footplate for 3 wheel, Left side  
M-127-06-120

# Mini Crosser

## Accessories



Support of legs for 3W, Left / right side  
T-127-06-108

Support of legs for 4W Left / right side  
M-127-06-961



Amputation support, Left / right for Ergo seat  
T-127-06-106

Amputation support, Left / right for Ergo2 seat  
M-127-07-162



Footplate sidebar. T-127-06-125



Thigh brace support 100\*300.  
Left or right adjustable for ERGO2  
CR-03074



Wheels, 13x5.00-6" Complete. Black, 6 pr. for  
M-Model. M-127-3-165

Wheels, 13x5.00-6" Complete. Black, 6 pr.  
Puncture proof for M-Model. M-127-3-168



Wheels, 13x5.00-6" Complete. Black, 6 pr.  
With spikes for m-model  
M-127-3-165p



Wheel 13x3.00-8" Complete. Black, 6 pr. For  
M-Model. T-127-3-065

Wheel, 13x3.00-8" Complete. Black, 6 pr.  
Puncture proof for M-Model  
T-127-3-068



Golf wheel, 13x5.00-6" Complete. Black, 4 pr.  
for M-Model.

E-115-03-065



Wheel, complete 6". Ø370 mm, 530/4,50-6",  
black, 4 pr. for M-Model. T-127-3-765.

This wheel can be used on all 4-wheel mini  
crosser, both front and rear. On the 3-wheel,  
it can only be used at the rear. Please notice  
that the turning radius increases when using  
this type of wheel in the front. M-127-06-150.



# Mini Crosser Accessories



Spare wheel holder, rear assembly  
T-127-06-138



Large front bumper, can be mounted on all  
4-wheel Mini Crosser  
M-127-3-535



Anti tip wheels, on some models they are  
standard mounted  
M-127-06-104



Safety bar, can be mounted both on the 3- as  
well the 4-wheeled Mini Crosser  
M-127-06-258



Charger for the Mini Crosser  
J.K.MEDICO 10 amp. Charger, AGM  
T-127-05-025  
J.K.MEDICO 10 amp. Charger, GEL  
T-127-05-034



The Mini Crosser uses two batteries - 24  
voltage. There can be used other batteries  
from other suppliers in other countries, ask  
your local dealer or contact Mini Crosser.  
Battery 51 AH, (C5) 12 Volt, GEL, EXIDE  
SR-00892  
Battery 75 AH, (C5) 12 Volt, AGM, CPX  
SR-05902  
Battery 94 AH, (C5) 12 Volt, GEL, EXIDE  
SR-00370  
**Batteries with screw terminals.**  
Battery 51 AH, (C5) 12 Volt, GEL, EXIDE  
SR-05993  
Battery 71 AH, (C5) 12 Volt, GEL, HAZE  
HZY-EV12-80



Speed reduction by potentiometer  
M-127-06-135  
Speed reduction by key switch  
T-127-06-121



# Mini Crosser

FAQ





# Mini Crosser

## For all Mini Crosser M-model, following applies:

### Standards

DS / EN 12184, 5th edition 2014-05-09 which is the newest standard.

Highlighting the following ISO independently:

- ISO 7176-19: 2008 - Wheeled mobility devices for use as seats in motor vehicles, ie Mini Crosser can be used as a seat in a car.
- ISO 10542-1: 2013-01-28 Issue 2 Clamping and safety restraint systems for wheelchairs
- ISO 7176-8: 2002 - This is the standard, that states - The seat must fulfill the weight capacity of the scooter. The ERGO2 is tested towards this standard, ie the Mini Crosser is built for 175 kg user weight, then the seat and armrest must be able to cope - the individual armrest must cope 95 kg pressure in a 15-degree angle, 5 cm from the end of the armrest without breaking.
- DIN EN 1122 Bio compatibility - Testing the seats and armrests.

### Technical Specification

#### User weight

Standard Mini Crosser is built to 175 kg.

HD Version 250 kg, the seat is also made for this purpose.

By removing the CE mark and the use of special adaptation Mini Crosser can be built to 300 kg.

#### Transaxles

There are three different trans-axles, each with their advantage / disadvantages:

- 10 km, can be used in hilly terrain / mountains, powerful enough
- 15 km, best use in flat terrain, but can also be used in cross country.
- 13 km, combination, it has less traction than 10 km version, but is stronger than 15 km.

In all transaxles there are mounted thermal sensors to prevent heat damage onto the transaxle.

At 140 degrees Celsius, the speed is set to 60%

At 150 degrees Celsius, the Mini Crosser stops.

#### The frame / chassis

To avoid corrosion and rust all Mini Crosser are treated with

- Zinc treatment.
- Then powder coated.

Furthermore, the frame is prepared for the accessories which, without drilling new holes in the frame

#### Battery sizes

Up to 94 Ah batteries, whether it is 3-wheel or 4-wheel.

#### Handbrake

The brake function is mounted on the rear left wheel. The reason is that we want to have the maximum breaking capability where the weight on the Mini Crosser is biggest.

Handbrake is easy to operate with one hand.

#### Suspension

Rear:

All Mini Crosser M-series has the same suspension system at the rear. There are two springs mounted.

There are two types of springs for Mini Crosser.

- Black, this is used for all Mini Crosser with user weight up to 175 kg.
- Red, this is used for HD, Cabin and Maxx models user weight up to 250 kg.

However, it is possible to change these later from black to red if desired.

Front:

On the four-wheel, a Rosta T-block. This is used because we want the front wheels must always have maximum contact with the ground. However, they act partly independently of each other so that the vehicle is straight when driving over obstacles, and it is maintenance free.

On the 3-wheel an oil-damped fork is used.

Progressive suspension performance shock absorbers and suspension systems provides a smooth ride.

#### Seats

ERGO2 seat is multi-adjustable in all functions.

- Seat height.
- Forward / Backward
- Seat turn
- Seat back angle

This can be made as electric solution for all functions

#### The armrest can be adjusted

- Angle
- Height
- Width

#### Controller

P/G S-200.

#### Other

The wiring and connectors used for Mini Crosser is designed for the conditions. We are using original MOLEX connectors.

#### Maintaining your Mini Crosser

Please refer to your user guide, in doubt ask your local dealer or contact Mini Crosser. We aim to train all our dealers in service, and all certified dealer have this sign:



#### Information

For information about Mini Crosser go to [medema.com](http://medema.com). If you have any questions, please e-mail [info@minicrosser.com](mailto:info@minicrosser.com)

#### Terms and conditions of sale and delivery

Please contact your nearest dealer, or contact Mini Crosser by [info@minicrosser.com](mailto:info@minicrosser.com)

#### Exceptions

Printing errors can occur. The range and the technical specification are subject to alteration. Product specifications and equipment may vary from country to country.



## MINI CROSSER - The original



**MINI CROSSER** - The original  
Made in Denmark

Medema A/S  
Enggaardvej 7  
DK-7400 Herning  
Denmark  
Tlf. +45 70 10 17 55  
[www.medema.com](http://www.medema.com) or [www.minicrosser.com](http://www.minicrosser.com)  
e-mail [info@minicrosser.com](mailto:info@minicrosser.com)